

Jonathan Janssens  
jonathan.janssens@ucdconnect.ie

### Living in Stockholm

Stockholm is a city of sophistication. It is unique in the first instance for its equal balance of water, built space and green space. It is composed of a number of substantial islands which make up its urban form. The KTH stockholm is one of two universities in the city where you can study architecture, being conveniently located just to the North of the city centre. One of the main Islands (where I lived) is Sodermalm, located south of the historical central of Gamla Stan. Navigating the city is relatively simple given the extremely efficient transport systems, even in the depths of winter. It is a city of design and sophistication and for erasmus students it is an amazing opportunity to experience living in a city which really works. Stockholm also has some architectural gems which are definitely worth visiting; Sigurd Lewerentz's Church at Bjorkhagen and also the Cemetery which he designed with Ashplund just outside the city.

Stockholm is also a great base at which to travel around the rest of Scandinavia (flights to Oslo for example can be quite cheap) so if you have an extra few quid there are lots of trips that are organised as part of the student union.



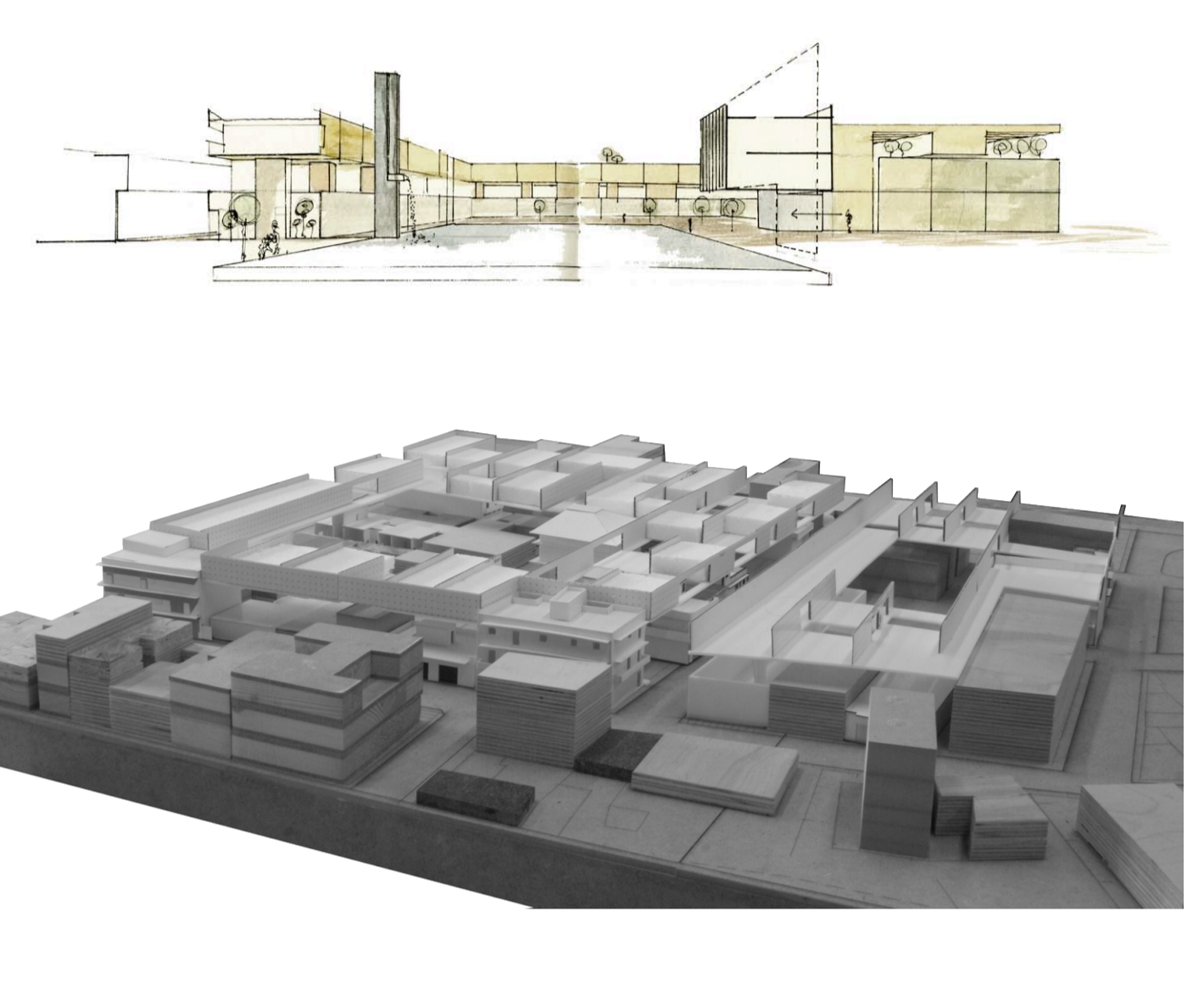
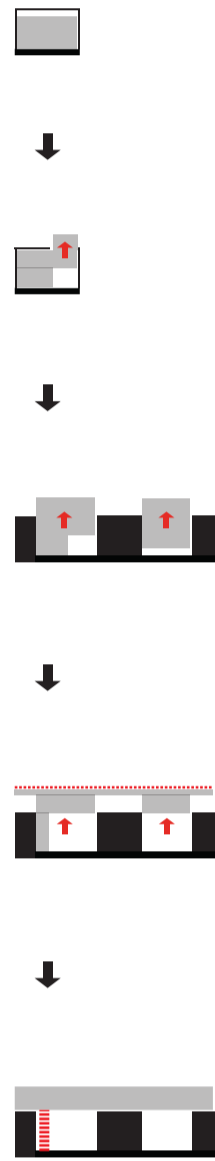
### The University

Studying architecture at the KTH is quite different to studying at UCD although the main focus is still on studio. It has a fantastic timber workshop, printing facilities, canteen and a choice of 10 or 11 studios to choose from ranging from Urban Planning to Parametrics. Most studios also have brilliant trips as part of their program (which you get credits for) and you can often structure your courses so that you can concentrate pretty much solely on your main studio project. The ratio of students to tutors is also quite good. Studio sizes range from around the 20-25 pupils with 2-3 tutors. Overall, I really enjoyed my experience living and studying in Stockholm and would highly recommend it.

If you have any questions or queries please don't hesitate to send me an email.



### Practice Based Studio - Man in Black



### "Living Above"

The Brief for this project related to the creation of a new social housing scheme in the city of Vittoria in the South Eastern region of Sicily. The project consisted of the studying of the city in its Urban form and then focusing on a particular site within the fabric of the city. Work was carried out both in Stockholm and on site in Sicily in conjunction with local architects and historians. The project began with the study of typical Sicilian dwelling and challenged students to re-consider the way people lived within the city.

This studio in general questioned the methodology of students in their representation and development of projects. Students were encouraged to work with models and clear graphics to help explain the main ideas behind their proposals.

